

FASTLANE® ATM/SONET Encryptor (KG-75/75A)

world's fastest Type 1 ATM encryptor



FASTLANE KG-75A ATM/SONET Encryptor

Overview

The FASTLANE® ATM Encryptor provides high-speed, end-to-end, low-latency security for local and wide area ATM networks. FASTLANE is the fastest ATM encryptor in the world and is offered in a variety of interfaces to meet user needs. The addition of SONET/SDH path level encryption to FASTLANE is currently in development providing the additional security of link encryption.

Features and Benefits:

Type 1 Security

- NSA Certified for Top Secret and Below
- Traffic Flow Security through ATM Header field suppression/encryption
- Traffic Stuffing (creates constant level of traffic)

Easy to Use

- Autorecovery
- Field Software Upgrades (eliminates delays and downtime)

Flexible to meet your needs

- ATM and SONET/SDH Capabilities in one Device
- Various ATM Interfaces (OC-3c, OC-12c, OC-48c, OC-192c)
- Various SONET/SDH interfaces (OC-3c, OC-12c, OC-48c) ¹
- Encrypts multiple levels of security (one level at a time)
- Supports single user or multi-user computer-based group

High Speed Performance

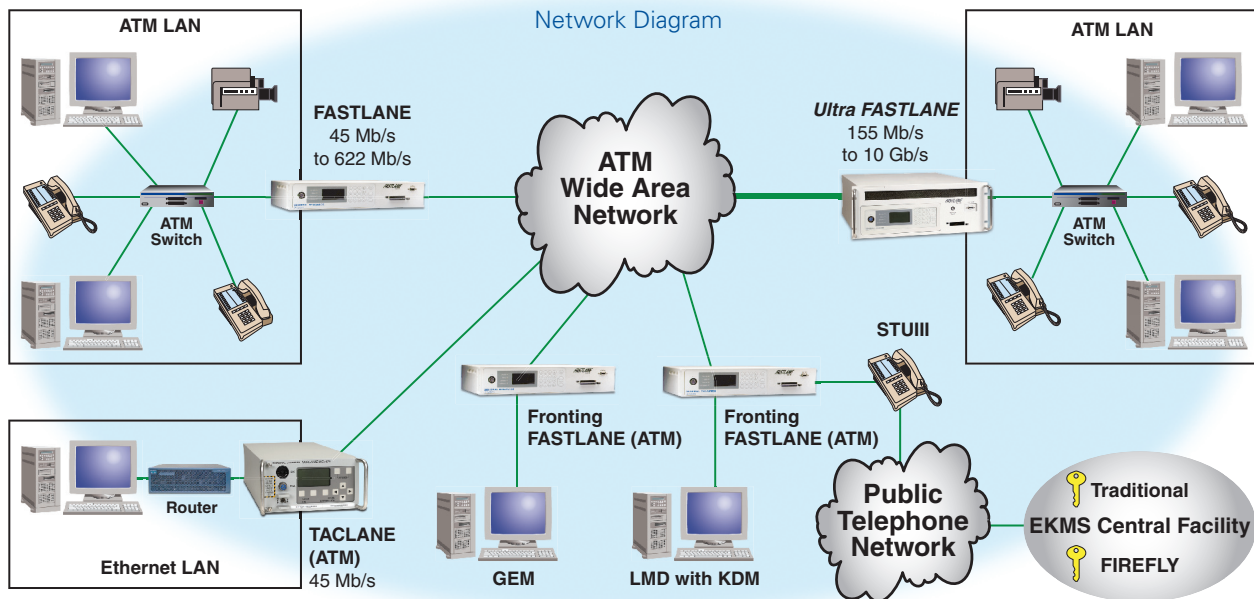
- Up to 10 Gb/s for ATM
- Up to 2.5 Gb/s for SONET/SDH ¹

Cost-Effective

- Uses public networks, eliminating cost for leased lines and provisioning of redundant paths

Keying

- Over-the-Network Key (OTNK) distribution and rekeying (ATM only)
- Enhanced FIREFLY (key generation)



¹ SONET/SDH capabilities available 4Q2006

FASTLANE® ATM/SONET Encryptor (KG-75/75A)

technical characteristics

Future Enhancements Bring Added Capability

Multi-rate interface card allows user selectable ATM or SONET/SDH encryption at STS-3/STM-1, STS-12/STM-4 or STS-48/STM-16 rates without changing the line cards. (Expected 4Q 2006)

Under Consideration:

OC-192/STM-64 ATM/SONET/SDH interface card and Crypto Modernization features

Interoperability

FASTLANE incorporates recognized standards and is interoperable with our NSA-Certified encryptor the TACLANE™-Classic (KG-175) while in ATM mode. FASTLANE can also be managed by GEM encryptor management software while in ATM mode.

Training and Customer Support

Classroom training is available in our Maryland training facility. Free Help Desk support is provided 24 hours a day, 7 days a week.

Standard Compliance:

General Dynamics C4 Systems is a working member of multiple standards committees. FASTLANE employs recognized open standards, including SNMP, ATM Forum UNI 4.0, PNNI 1.0, and ILMI 4.0.

Price: Starts at \$37,500

Warranty: Comes with 12 month hardware/software warranty.

FASTLANE is a registered trademark of the National Security Agency.

TACLANE is a trademark of General Dynamics C4 Systems.

The Type 1 encryption provided by the FASTLANE is part of the Department of Defense Defense in Depth strategy. Type 1 encryption is only one portion of the overall defense in depth. A comprehensive network Information Assurance strategy, involving Defense in Depth, is required to ensure secure and reliable protection for sensitive and classified information.

For more information, please contact:

GENERAL DYNAMICS
C4 Systems

INFOSEC 77 A Street, Needham, MA 02494-2806 USA
Tel 781 455 2800 Fax 781 455 5555 Email infosec@gdc4s.com
www.gdc4s.com/networkencryption

Secure Communications: We Bring You What's Next

ATM Technical Specifications:

ATM I/O Interfaces:

OC-3c (155 Mb/s) multi-mode
OC-3c (155 Mb/s) single mode
OC-12c (622 Mb/s) single mode
OC-48c (2.5 Gb/s) single mode
OC-192c (10 Gb/s) single mode

Protocols:

ATM Signaling: ITU Q.2931, ATMF
UNI 4.0, ATMF ILMI 4.0 and PNNI 1.0
compliant

SNMPv1

Operator Interface:

Front Panel and VT Terminal

Remote Management/configuration
via GEM

Maximum Number of ATM Connections:

1022 active connections
(channel and/or path)

Types of Connections Supported:

Permanent Virtual Circuits/Paths
(PVC/PVP) including soft PVCs/PVPs

Switched Virtual Circuits/Paths
(SVC/SVP)

Point-to-point

Point-to-multipoint

Simplex

Duplex

Field Tamper Recovery:

By use of Master and Registration
card

Users:

One (1) Master CIK

Nine (9) User CIKs

Key Options:

FIREFLY or Enhanced FIREFLY
(22 vector sets)

Current/next on each of 10 CIKs and
Master Card

768 Preplaced traditional keys
(64 current PPKs, each with 11
changeovers)

Key fill via Data Transfer Device (DTD,
AN/CYZ-10) or Over the Network
electronic delivery and rekey (OTNK)
through the Key Distribution Manager
(KDM). KDM includes CKL support.

Security Management Using GEM: Centrally managed FASTLANE units

Up to 8 Network Managers supported

Managed on Plain Text (RED) or
Cipher Text (BLACK) sides

FIREFLY or Enhanced FIREFLY
protection of management traffic

Configure/monitor FASTLANE secure
calls

Collect audit logs for querying and
archiving

Reliability:

21,000 to 25,000 Hours Mean Time
Between Failure (MTBF) depending
on the interface

Certification/Approvals:

NSA certified for Top Secret
Codeword and below

TEMPEST: NSTISSAM TEMPEST/1-92
approved

Physical Characteristics

Dimensions:

7.25" H x 17.50" W x 21.50" D

Weight:

approximately 35 lbs.

Desktop or rack-mountable
(19" standard rack)

Power:

110/220 VAC +/- 5VAC, 50/60 Hz,
auto-sensing

150W to 240W depending on the
interface

Environment:

50°F (10°C) to 85°F (30°C) (operating)

-10°F (-23°C) to 150°F (65°C)
(non-operating)

80% Humidity (non-condensing)

MIL-STD-461D, Electromagnetic
Interference (EMI)

© 2006 General Dynamics. All rights reserved. This
brochure is for information purposes only. General
Dynamics C4 Systems makes no warranties, express
or implied, in this summary. Specifications subject to
change without notice.

