



Cryptel®-IP

The complete range of
NATO-approved IP crypto

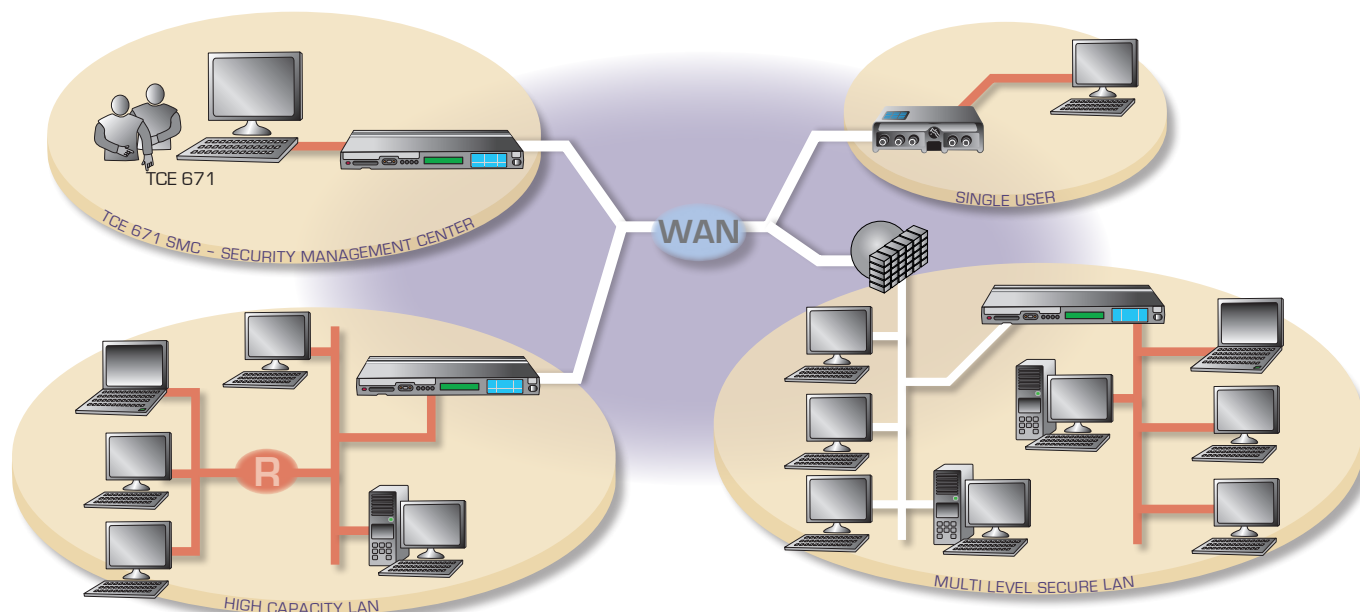
Cryptel®-IP

offers a complete range of NATO-approved solutions for IP encryption.







- **Cryptel®-IP** provides encryption units that **support various network interfaces** from narrowband tactical communication links up to Gigabit Ethernet – with both electrical and optical interfaces.
- The encryption units can either be supplied with **NATO Type A or NATO Type B algorithm**. The Type B algorithm can even be provided in a customised version.
- Encryption units can also be supplied in **Dual version** with both NATO Type A and NATO Type B algorithms, where algorithm to be used is selected on initialization of the unit.
- With the powerful **Security Management Centre (SMC)**, you can manage your networked encryption devices online. In this way, you reduce the need for local operation and can control and monitor your encryption network from one place.
- A separate **Key Generation Centre (KGC)** offers flexible solutions for key production.

Typical network configuration



Overview of Cryptel® IP products

Overview of Cryptel® products				Encryption algorithms and accreditation level			
				NATO Type A	NATO Type B	Customised	Dual
Encryptors	TCE 621/M		Tactical unit Ethernet (EI/Opt) USB, RS-232	NS *	NS *	NS *	
	TCE 621/C		Gigabit Ethernet (EI/Opt)	CTS	NS	NS	NS
	TCE 621/B		100 Mb/s Ethernet (EI/Opt)	CTS	NS	NS	NS
	TCE 621/A		10 Mb/s Ethernet (EI/Opt)	CTS			
Management tools	TCE 671 – SMC	Security Management Centre		✓	✓	✓	✓
	TCE 114 – KGC	Offline key generation centre for production of keys		✓	✓	✓	✓
	Config-Tool	PC application to support definition and loading of configuration data		✓	✓	✓	✓
	CVM	Customisation Vector Management. A tool that lets you define and load the customisation vector for the AES algorithm				✓	✓
	SW-Loader	PC application that enables to load software for the encryption devices		✓	✓	✓	✓
				CTS = Cosmic Top Secret NS = NATO Secret * = in evaluation			